



PEERLESS PUMP COMPANY

Travis Montembeault, Director – Commercial Development

Mohammad Turki, Regional Sales Manager

Tuesday, 14 October 2025

PEERLESS PUMP HISTORY

PEERLESS PUMP DIVISION
FOOD MACHINERY AND CHEMICAL CORPORATION



Dayton Dowd Pump Companies founded
LaBour Pump Company established
Peerless Pump acquires Dayton Dowd and Sterling
Company expands into international markets (UK, Mexico)
The Company acquires Power Dynamics
Company established facility in Monterrey, Mexico
Peerless becomes its own performance unit within Grundfos

1900



Present

Sterling Pump Company founded

Peerless Pump Company founded

Company moves headquarters to Indianapolis

Company is purchased by IH

Company acquires LaBour and Taber Company

Grundfos acquires Peerless family



PEERLESS PUMP FACILITIES

US Locations

Indianapolis – HQ & Main Factory

Houston – Peerless Engineered Systems

Indianapolis - QRC

Lubbock – QRC

Fresno – QRC

410 Employees

85 Reps/ASPs

Mission Statement

To supply quality pump products and services that exceed our customer's expectations and provide world class returns for our co-workers, shareholder and community.



Peerless - Indy



Lubbock QRC



PES - Houston



PEERLESS – INDIANAPOLIS, IN



Summary

- Peerless Pump Corporate Headquarters
- 300,000 ft² Manufacturing Facility
- Serving Fire, Industrial, and Municipal Markets domestically and internationally
- Full HI, NFPA, UL/FM testing capabilities
- Centrally located in the US



FACILITY DETAILS – PPU1 INDIANAPOLIS

Size

- 300,000 ft² facility

Functions

- Manufacturing
- Horizontal & Vertical Testing
- Sales & Administration

Capacity

- Up to 150,000 GPM
- Up to 5,000 HP

Key Attributes

- Centrally located
- Easy access to transportation

Value

- Guarantees performance and compliance with customer & international standards

Certifications

- ISO 9001, 14001, & 45001
- CE
- UL/FM Test Lab

Testing

- Performance, NPSH, String, Vibration, Noise
- HI and BS/ISO Standards
- Voltages: 230, 460, 4160V (60Hz)



INDIANAPOLIS TEST FACILITIES

Testing Types

- Hydrostatic
- Performance
- String
- NPSH
- Vibration
- Noise

Certifications

- HI
- ISO
- UL
- FM
- BS



Performance Test Capabilities

- Horizontal Lab and Vertical Lab
- Up to 150,000 U.S. GPM
- Up to 2,500 HP
- 230v, 460V, 4160V



PEERLESS ENGINEERED SYSTEMS – HOUSTON, TX



Summary

- 38,000 ft² Facility
- Specialize in packaged fire systems for the fire market
- Standard packages and highly engineered custom packages
- Serves domestic and international markets

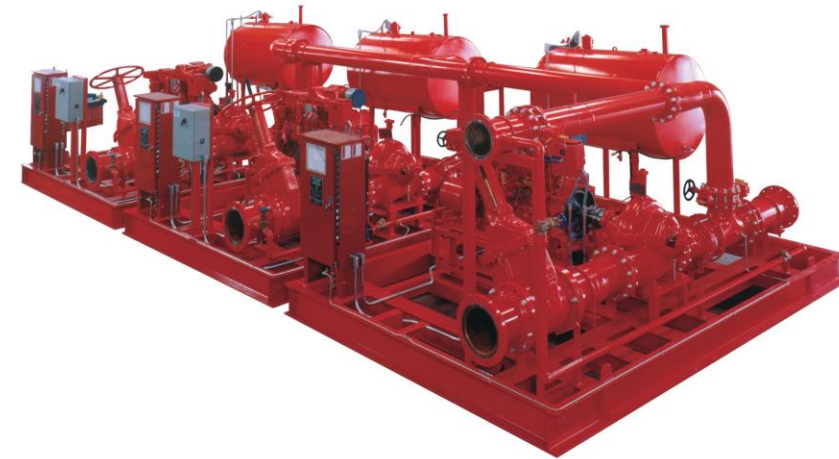
Simplex Enclosed Diesel Vertical Skid



Custom Simplex Enclosed Electric Horizontal Skid

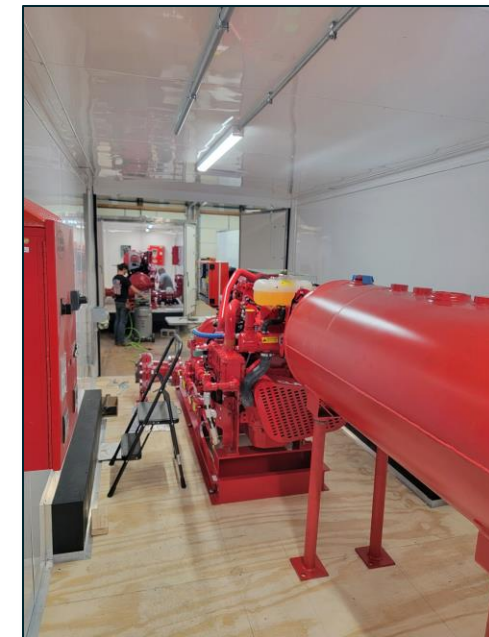


Triplex Open Diesel Horizontal Skid



PORTABLE FIRE TRAILERS

- 1500 GPM Trailers
- 2500 GPM Trailers
- Diesel driven



PEERLESS FIRE TECHNICIAN TRAINING

Hosted at least quarterly:

2x – Indianapolis

1x – West Coast

1x – East Coast

Special programs available for corporate wide training

Three Day Course Includes:

- History
- Codes & Standards
- Pump Construction Details/Differences
- Pump Performance
- Pump Room Requirements/Layout
- Hands On Assembly & Disassembly
- Control Training
- Diesel Engine Training
- Acceptance Testing
- Flow Testing



<https://www.peerlesspump.com/training/>



Peerless FireConnect Remote Monitoring of Fire Pump Systems

Travis Montembeault – Director - Commercial Development, Peerless Pump



Peerless FireConnect® is FM approved according to Approval Standard 1330 Fire Pump Monitoring and Automated Testing.

WHAT IS A SMART FIRE PUMP SYSTEM?



Fire Pump System Management from anywhere in the world

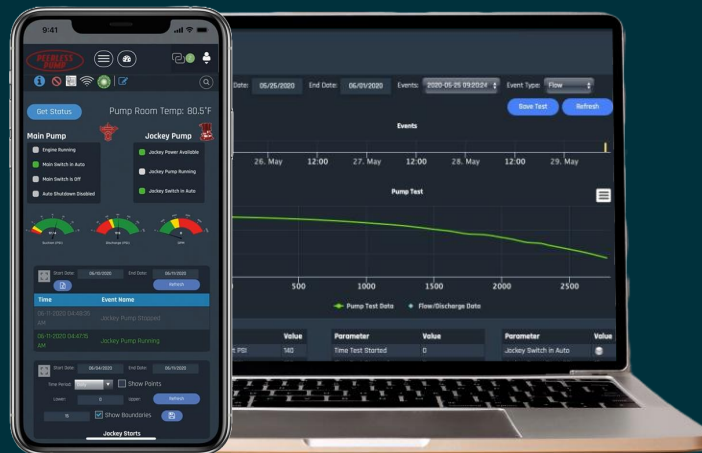
HARDWARE



Gateway Device

+

SOFTWARE



Cloud-Based Software

=

FireConnect

Ensures ITM Compliance

Allows Realtime Diagnosis

Enables Sustainability Initiatives

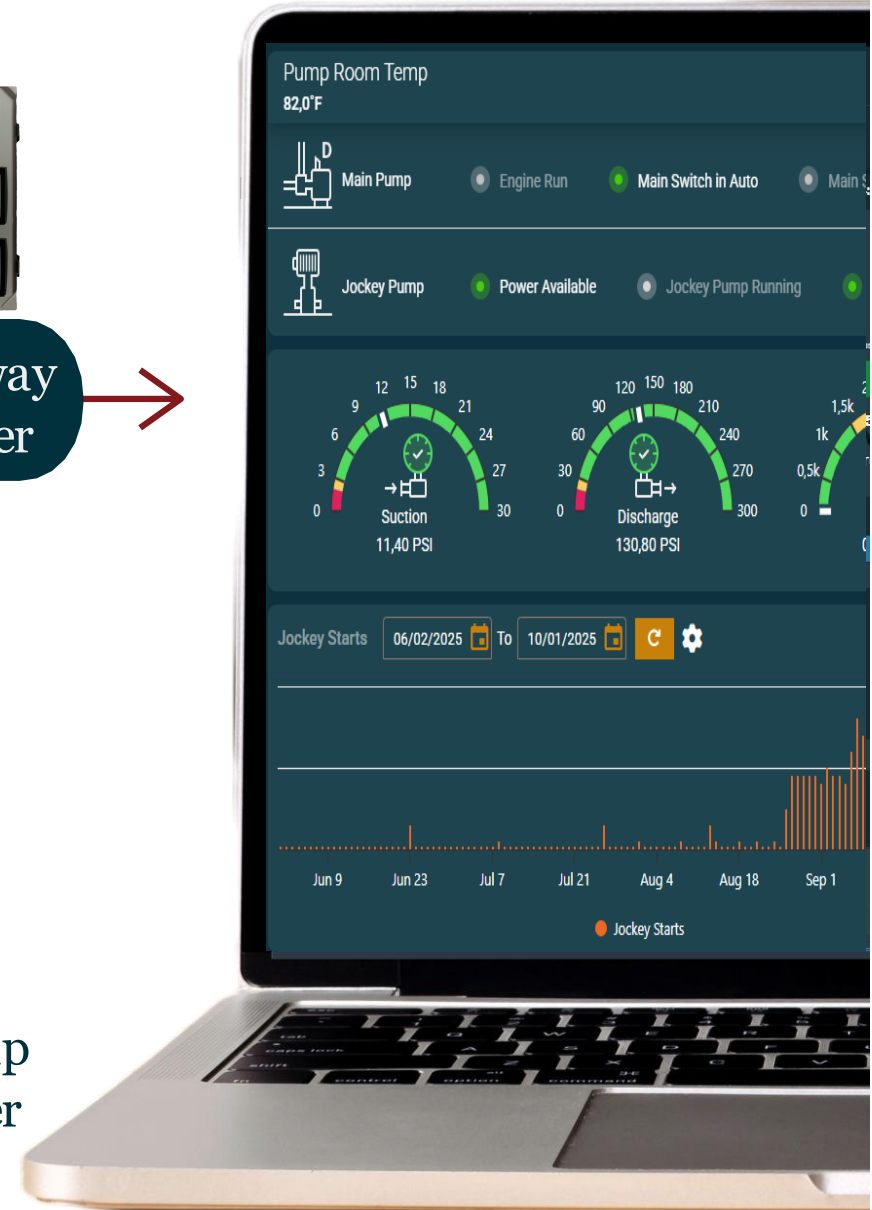
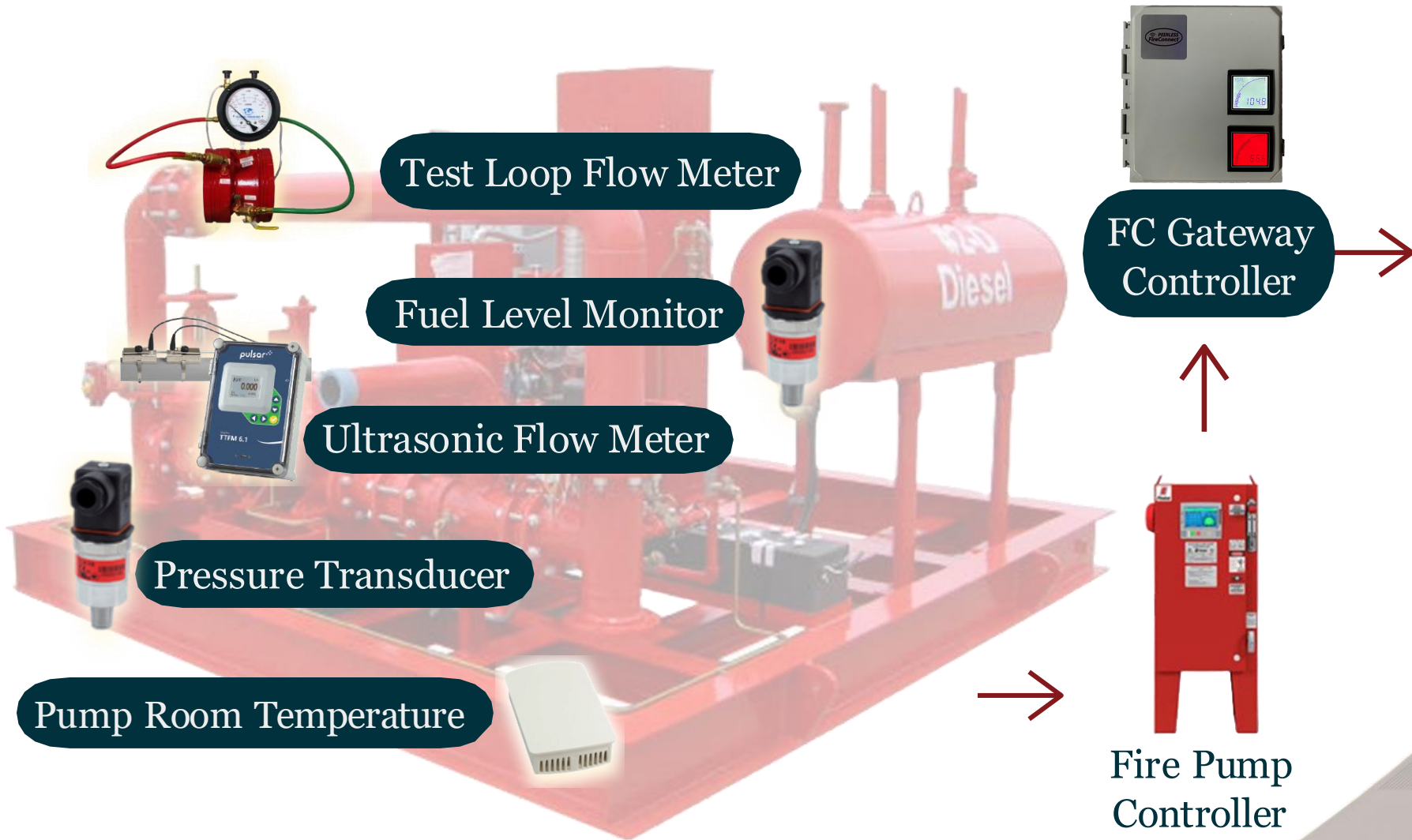
Provides Peace of Mind

Empowers Data Driven Decisions

FIRECONNECT: THE SYSTEM



Technical View of System - Diesel



TWO HARDWARE OPTIONS

Suitable for retrofit and new installations



**FIRECONNECT GATEWAY
CONTROLLER (FCGC)**



**FIRECONNECT JOCKEY
CONTROLLER (FCJC)**





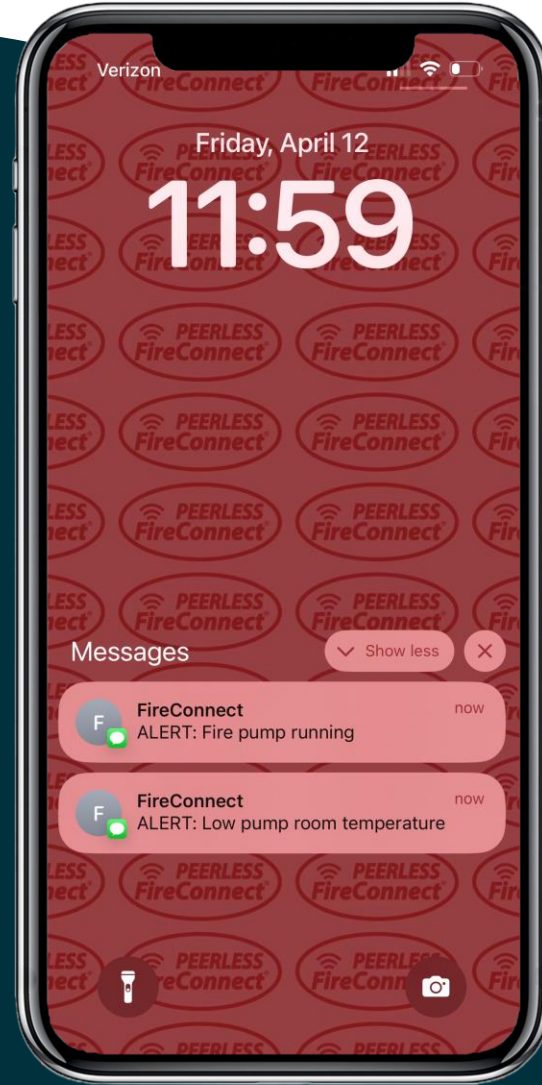
EVENT NOTIFICATIONS



Customizable SMS & Email Alerts

EXAMPLE ALERTS

- Increased jockey pump starts
- Fire pump turns on
- Low pump room temperature
- Common trouble & other controller alarms
- Low fuel level
- Low suction pressure



MULTI-SITE MANAGEMENT



View & manage your entire portfolio of fire pump systems

Connectivity

All Online Offline Active only

58 Alarm
92 OK
16 Offline
166 Total

05/01/2025 To 10/01/2025 Search

Device ID	Device Name	Last Event ↓	Inspection Date Time	Event Type
18118	Newcastle IC-Diesel	10/01/2025 04:31:53 PM	Inspection Not Available	
17400	17400 South Pump Roo	10/01/2025 03:06:00 PM	Inspection Not Available	
16996	North Electric Pump	10/01/2025 11:53:18 AM	Inspection Not Available	
17217	RIC Diesel Pump 1721	10/01/2025 11:21:27 AM	Inspection Not Available	

Status ↑	Device ID	Online	Pump	Location	Pump Type	Jockey Daily Starts	Suction Pressure	Last Run Event	Discharge Pressure	Power
	17015		Tabler Station 2	Tabler Station	Diesel	3,0	17.94	06/16/2025 10:40:37 AM	161,0	
	17016		West Pump LP...	Lima	Diesel	1,0	10.51	09/29/2025 08:34:51 AM	160,0	
	17033		WHBC Diesel P...	Winton Hill Business Ce...	Diesel	0	48.56	09/25/2025 01:24:32 PM	115,0	
	18049		WHBC Electric ...	Winton Hill Business Ce...	Electric	2,0	40.57	09/25/2025 02:02:48 PM	143,8	
	18038		#1 Diesel	Pump House #1	Diesel	1,0	5.09	08/25/2025 09:31:26 AM	140,1	
	18102		#1 Electric (Bac...	Pump House #1	Electric	11,0	5.09	None Within Range	N/A	
	17173		17173 Diesel #1	SanMartin Obispo (Mexi...	Diesel	0	15.27	None Within Range	6.553,5	
	17223		17223 MRK4-E ...	Gillette Lodz (Poland)	Diesel	1,0	0.59	10/01/2025 09:38:19 AM	11,3	

Records per page: All 1-166 of 166

KEY FEATURES

- Customizable report view
- View all connected systems in one spot
- Automated event log
- Status at-a-glance with LED indicator

ITM ACCOUNTABILITY



Log and monitor your ITM history

17362 Peerless Electric

Snapshot Main Pump Jockey Pump **System Test** Incident Command Configuration Documentation Reports Back to dashboard

Test System Info **Inspection Log**

Inspection Log [Save](#)

01.01.25 To 25.03.25

User Name: Josh-PPU Phone #: 1-317-649-5941 Time To Full Speed: 1sec Inspection Date: 25.03.25 06:35:07 PM Inspector Approval: JNF Event Type: Monthly Test

Last Saved: 25.03.25 06:36:32 PM

Pump House

Heat in pump room is 40°F (4°C) or higher Yes No N/A

Ventilation louvers are free to operate Yes No N/A

Excessive water does not appear on the floor Yes No N/A

Coupling guard is in place Yes No N/A

Not less than 70°F (21°C) for diesel engine pump without engine heater Yes No N/A

Pump Systems

Pump suction, discharge, and bypass valves are open No piping or hoses leak Yes No N/A

No piping or hoses leak Yes No N/A

Fire pump leaking one drop of water per second at seals Yes No N/A

Suction line pressure is within acceptable range Yes No N/A

System line pressure is within acceptable range Yes No N/A

Suction reservoir is full Yes No N/A

Wet pit suction screens are unobstructed and in place Yes No N/A

Waterflow test valves are in closed position, hose connection valve is closed, and the line to test valves is free of water Yes No N/A

Hose connection valve is closed Yes No N/A

The line to test valves is free of water Yes No N/A

Electric Systems

Controller pilot light (power on) is illuminated Yes No N/A

Transfer switch normal power light is illuminated Yes No N/A

Isolating switch for standby power is closed Yes No N/A

Device phase alarm light is not illuminated Yes No N/A

KEY FEATURES

- Monitor weekly/monthly run tests
- Checklist for inspection accountability
- Track pump performance/degradation
- Keep a log of all run events
- Report diesel run times for emissions
- Report out for AHJ/insurance visibility

Practical Applications



Leak Detection with Jockey pump monitoring

KEY FEATURES

- Increased jockey pump starts = more water lost
- Historically difficult to identify demand for the jockey pump
- Run time and cycles give an indication of when it's time to consider replacing jockey pump
- Estimates can be provided on daily water loss due to system leaks

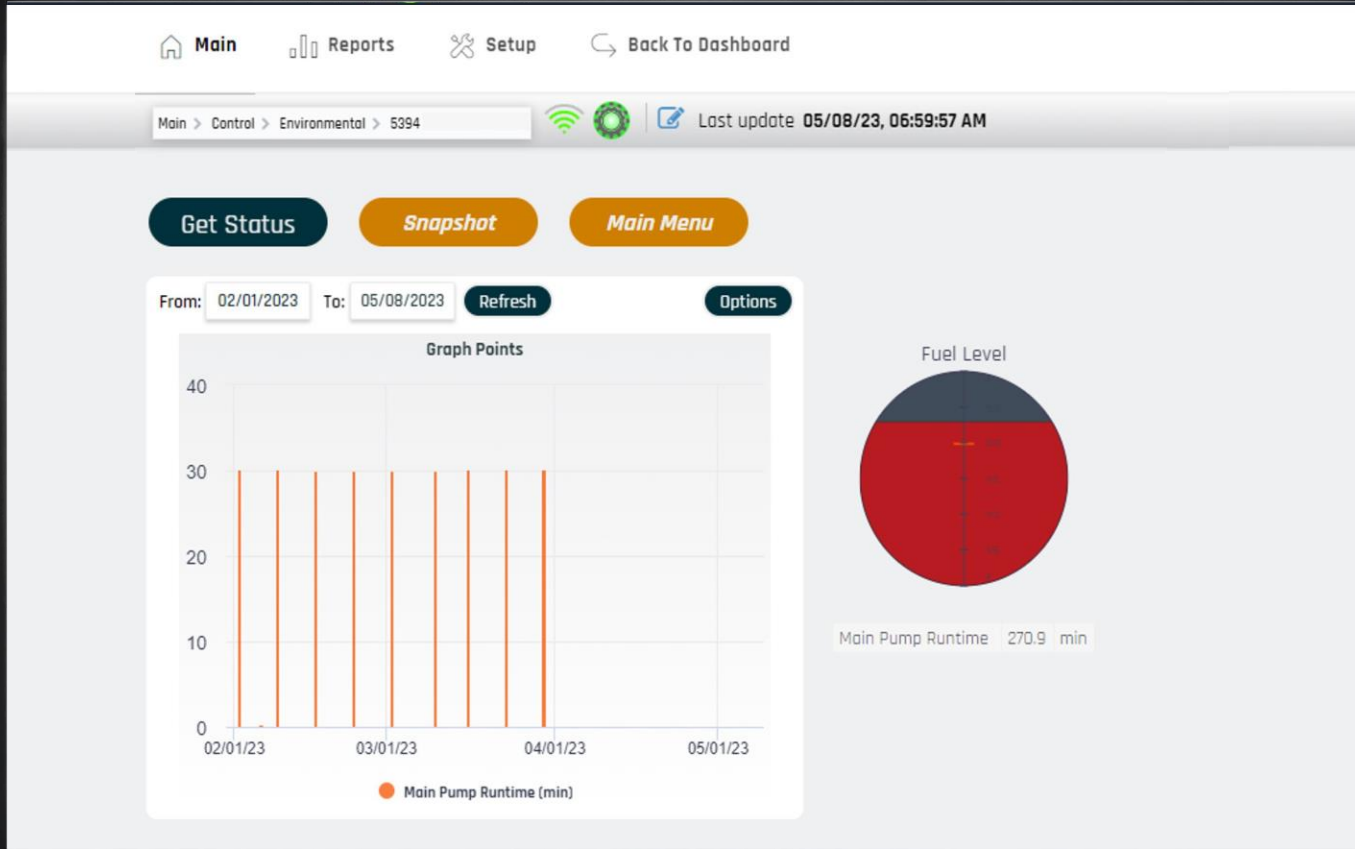


DIESEL DRIVER



Log and monitor your ITM history

APPLICATIONS



KEY FEATURES

- Monitor weekly/monthly run test
- Keep a log of all run events
- Report diesel run times for emissions
- Report out for AHJ/insurance visibility
- Diesel fuel level trends

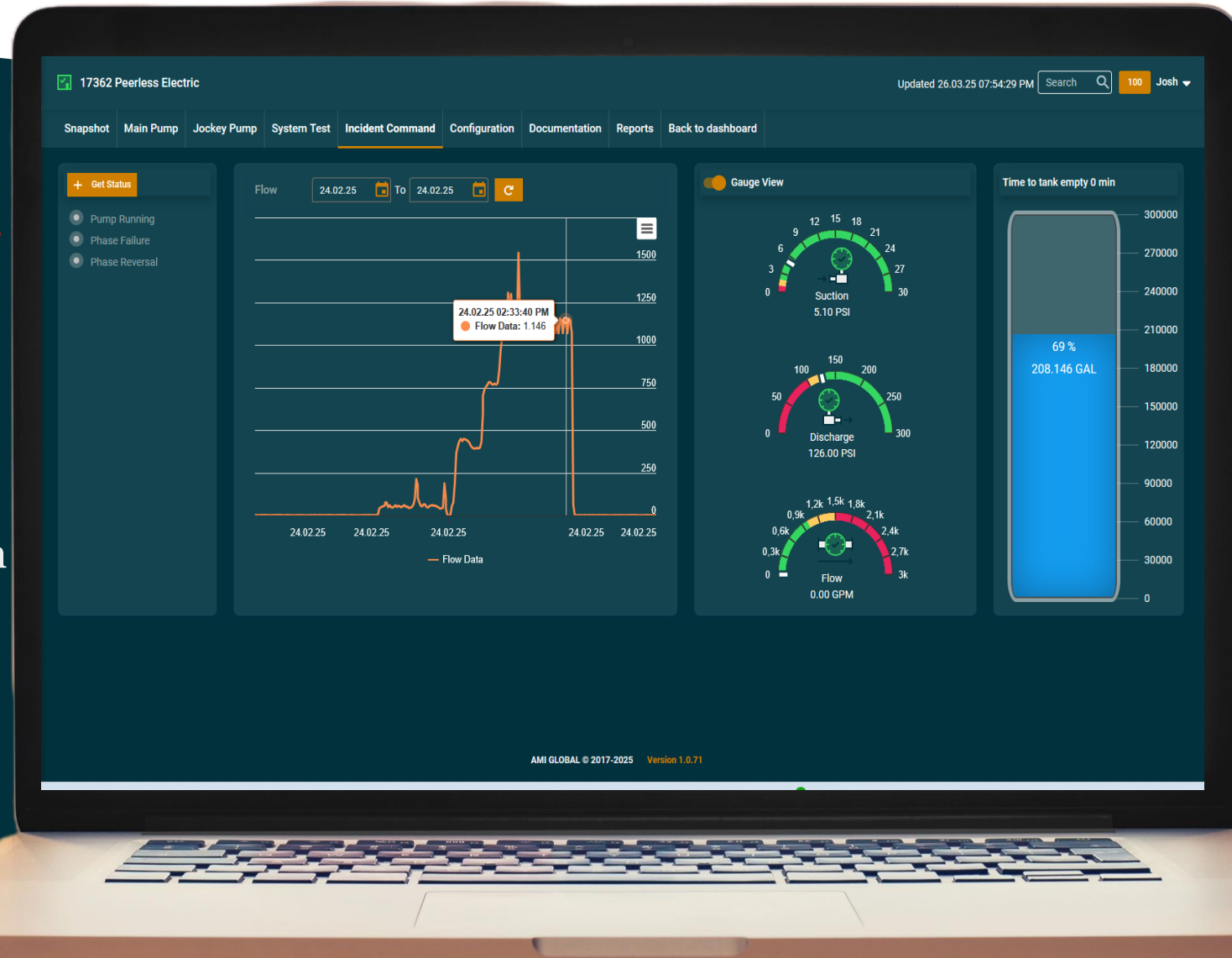
PRACTICAL APPLICATIONS



Incident Command: Real-time system data during a fire event

KEY FEATURES

- Are the fire pumps running?
- How much diesel fuel is left in the tank?
- How much water is remaining in the storage tank?
- How many GPM is the pump flowing?
- Is the pump flowing more over time indicating the fire is spreading?



**FIRE PUMP SYSTEM
MANAGEMENT FROM ANYWHERE
IN THE WORLD**



Questions?

